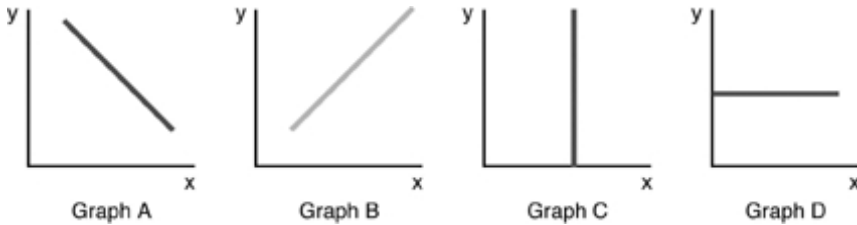


REVIEW: EPISODE 6 - GRAPHS

MULTIPLE CHOICE. Choose the one alternative that best completes the statement or answers the question.

- 1) A relationship between two variables in which one variable increases at the same time as the other decreases is called _____
A) direct. B) constant. C) nonlinear. D) inverse.

- 2) A direct relationship occurs when _____
A) the two variables have no identifiable relationship with each other.
B) the two variables being compared change in opposite directions, or when one goes up the other goes down.
C) the two variables being compared change in the same direction, or when one goes up the other also goes up.
D) a change in one of the variables causes a change in the other variable in any direction.

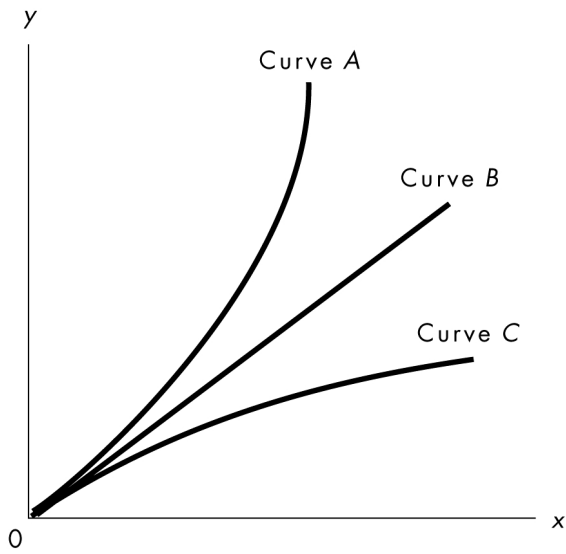


- 3) In the above graphs, an inverse relationship is shown by _____
A) Graph A. B) Graph B. C) Graph C. D) Graph D.

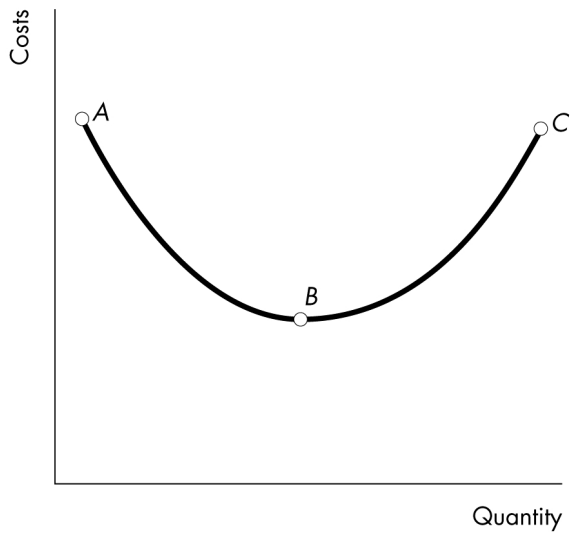
- 4) In the above graphs a direct relationship is shown by _____
A) Graph A. B) Graph B. C) Graph C. D) Graph D.

- 5) A negative slope _____
A) represents a direct relationship, such as snow fall and car accidents.
B) represents an inverse relationship, such as beers consumed and test score.
C) indicates that there is no relationship between two variables, such as women's wages and likelihood of sunshine.
D) means that the line crosses below the x-axis.

- 6) For the Jones household it has been estimated that for every ten degrees increase in the outdoor temperature the consumption of ice tea increases by 5 glasses. What type of relationship exists between temperature change and the consumption of ice tea? _____
A) negative relationship B) no relationship
C) maximum relationship D) positive relationship



- 7) In the above figure, which curve shows a negative relationship between x and y ? _____
- A) Only curve A.
 - B) Only curve B.
 - C) Only curve C.
 - D) None of the curves show a negative relationship.



- 8) In the above figure, the relationship between costs and quantity is negative _____
- A) between point A and point B.
 - B) at nowhere along the curve.
 - C) between point B and point C.
 - D) along the entire curve.

x	y
0	0
2	6
4	12
6	18
8	24
10	30

9) The above table indicates that variables x and y are

- A) negatively related.
- C) inversely related.

- B) second cousins.
- D) positively related.

9) _____

10) A graph shows that as fees to use ATM machines increase, people use them less frequently. The graph of this relationship would show

- A) a negative relationship.
- C) a direct relationship.

- B) an inverse relationship.
- D) Both answers A and B are correct.

10) _____